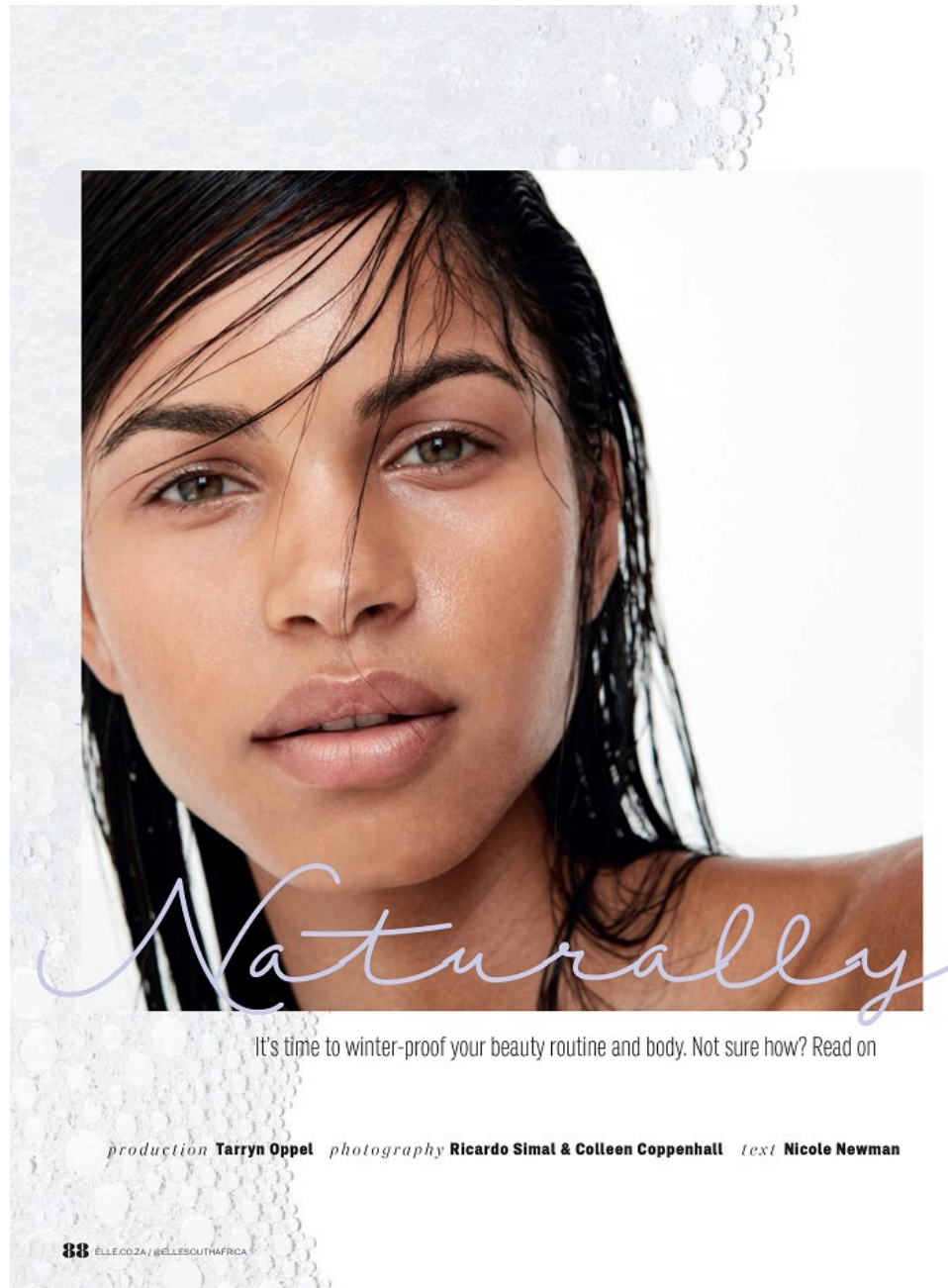


ELLE BEAUTY

AFTER SUN

As winter approaches,
treat your skin, hair
and lips to some
much-needed post
summer nourishment





*photographer **RICARDO SIMAL** - beauty



www.sncm.co.za



*photographer **RICARDO SIMAL** - beauty



www.sncm.co.za









*photographer **RICARDO SIMAL** - beauty



www.sncm.co.za



*photographer **RICARDO SIMAL** - beauty



www.sncm.co.za



*photographer **RICARDO SIMAL** - beauty



www.sncm.co.za





ALL EYES on you

The rise of the graphic eye signals
the return of bold make-up and a
confident attitude

by **Nicole Newman**
photography **Ricardo Simal**

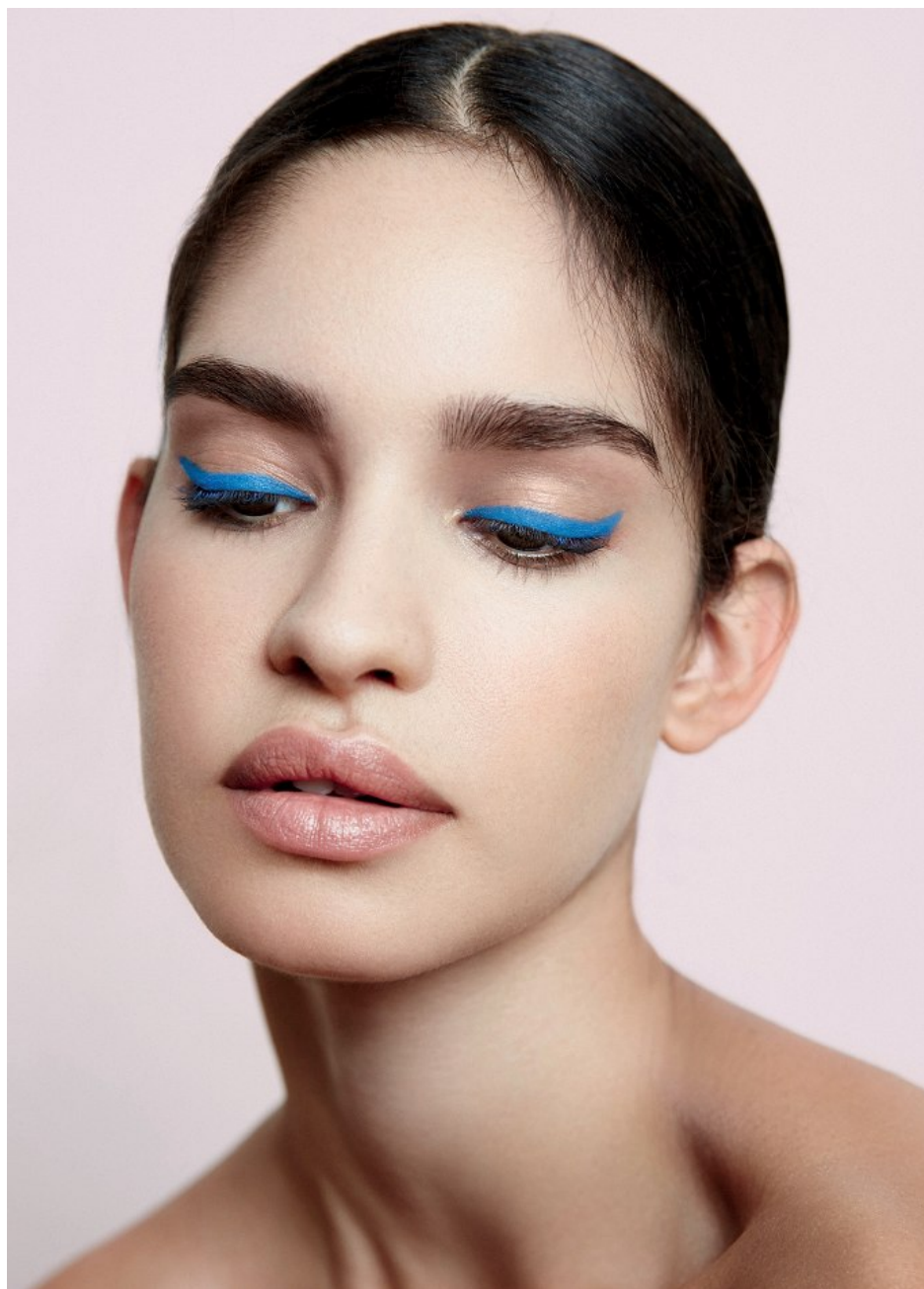
Golden Hour

The metallic shadow update (thanks to its graphic twist), first pencil out the shape with a light gold eyeliner. Then, fill in using your favourite shade of metallic shadow, and apply gold dust on top for that added shimmer. Contrast the feminine eye with a dark nail lacquer.

WE USED

Morgan Taylor Lacquer: If Looks
Could Thrill, R138
Inglot Sparkling Dust in Shade 2, R349







*photographer **RICARDO SIMAL** - beauty



www.sncm.co.za











TANGERINE SQUEEZE

Create a sultry look by mixing a bright orange hue with a deeper, warmer shade on inner and outer corners of the eyes. It looks beautiful from a distance and interesting up close.

FULL PIECE, R1 140, LALESSO





BLUEBERRY BLUSH

A bright blue liner instantly opens the eye. Trace a thick line on the bottom lid, finishing at the inside corner of the eye for a captivating effect.

FULL PIECE, R1 199,95, BILLABONG SURF CAPSULE





FRAME work

*A girl can NEVER have
too many sunglasses -
it's an added extra but never
an afterthought...*

BY TARRYN OPPEL AND NICOLE NEWMAN
PHOTOGRAPHY RICARDO SIMAL



EccENTric

Top: R389, Topshop; pants:
R14 500, Simone Rocha at
Studio 8; sunglasses, R14 500,
Anna Karin Karlsson at
Extreme Eyewear



Monochrome

Top, R699, Country Road;
from top to bottom:
oversized sunglasses, R69, Forever 21;
round sunglasses, R699, Innu at SDM Eyewear;
two-tone sunglasses, R2 300, Marc by
Marc Jacobs at Salilo















The Wool Knit

JERSEY, R10 400, KENZO AT CATHERINE GAYLEA
FASHION, PINAFORE DRESS, R140, TOPSHOP



PHOTOGRAPH: RICARDO SIMAL / FASHION OBJECTS / ARTIST ON FILM / FASHION ASSISTANT: INKALOS SANTOS / HAIR: ALIT
VELODIA / STYLING: MADE UP KELLY PATRICK / MAKEUP: FOR DANIEL LINDO THE SUMMER 2018 MAKEUP COLLECTION / FASHION
EDITOR: ANDREA JACOBS / MODEL: LUCY / AGE: 24

CANDICE, R599, HOSAN

Opposite:

FRINGED WOOL SCARF, R12 999, BURBERRY;
PANTS, R1 099, TOPSHOP