





1 *Instant correct*
long wear colour
correcting primer
sisley

2 *HYDRA-GLOBAL*
Activator
of Hydration
Anti-Age
Anti-Wrinkle
Booster
sisley

3 *Clintone Pop Lip*
Colour & Primer in Kiss Pop, R305

PAINTERLY AND IMPERFECT
Make-up guru Pat McGrath was overheard saying, "The key is to explore without caution..." as she spoke of one of her looks for the spring-summer 2018 (S/S18) season. This precisely sums up the mood: bright, look-at-me colours splattered and smeared artistically – pushing the experimentation factor just that much further. It's important not to over-think it. There is a youthfulness that comes with spontaneous lines and joyful messiness, meaning that your shadows and liner can look like it was applied with a kuki instead of kohl.

To keep it wearable, opt for clean, glassy skin (achieved by adding a moisture boost to the skin with a plumping serum, followed by a correcting smoothing primer), and one focal point, be it a neon stained pout or painterly-effect eyes.

Try: 1. Sisley Instant Correct Colour Correcting Primer in 02 Just Lavender, R1 110; 2. Sisley Hydra-Global Serum (30ml), R3 360; 3. Clinique Pop Lip Colour & Primer in Kiss Pop, R305

art CLASS

STEP INTO THE NEW SEASON WITH MAKE-UP THAT'S EXPERIMENTAL, ARTSY AND A LITTLE UNDONE, BUT PERFECTLY ON-TREND

By **KELLY FUNG** Photography **HIGOR BASTOS**

OTT LINER
S/S18 sees liner being more than just liner. Drawn-on shapes, graphic detailing, use of negative space and rebellious lines that go against 'the usual' was the focus. To put it plainly, there are no rules and it can be placed anywhere you want. At Larwin, the cat eye was smudged, as if wiped on with a forefinger from the centre of the eye. At Rochas, jet-black liner didn't hug the lashline as you would expect, rather it lined the entire external eye shape, creating somewhat of a Picasso optical illusion. For at home, there are two schools of thought: lived-in, nonchalant messiness, or detailed and precise – either way, it's anything but normal right now.

Try: Dior Diorshow On Stage Waterproof Liquid Eyeliner in 541 Matte Yellow, 001 Matte White, 096 Vinyl Black, and 291 Matte Pop Blue, R565 each

HAIR AND MAKE UP: NANDI KAI; MODELS: ANKUSHMA, OZGA, RUPN KOSK; MAKEUP: ACCORDONA, TITI, LAUREN NICOL

106 ELLE.CO.ZA / @ELLESOUTHAFRICA

Dior
MATTE WHITE

ELLE BEAUTY



BLUE HUE

Back in the '70s and '80s, when blue eyeshadow was the universal make-up masterpiece, it was crucial that it was painted on carefully, shaped precisely to the browbone and the hue to be undeniably shimmering. In 2018, it's time to modernise. The S/S18 catwalks were chock-a-block full of blue lids, fresh in all forms, with sky-blue smears across the eye at Marni and House of Holland; smudged on haphazardly at Chanel; and painted moons in aquamarine at Missoni. The trick to not looking as if you've stepped off an early Madonna music video is not to think about it too much. Be flippant, unconcerned and brave when dipping your finger into your blue eyeshadow (we love a cream-based one for a painterly effect) and literally smear it on. Liner is optional.

Try: 1. Urban Decay Iconic Eyeshadow in Radium and Peace, R250 each;
2. GOSH Forever Metal Eyeshadow in Blue, R162

ELLE BEAUTY



DOTS AND DOODLES
To take barely there, natural make-up one notch up, Pat McGrath hand-painted black tattoos on the faces of the models at the Yohji Yamamoto show. At Eudon Choi, liner was wobbly as if applied in a rush in the car. This season is all about the girl who does the opposite of what everyone expects. She's strong; she's aggressive," says top make-up artist Mark Carrasquillo, a favourite of Calvin Klein, H&M, JW Anderson and other fashion houses. The beauty about art, or perhaps what makes this beauty look like a form of art, is that there is no such thing as a mistake. Explore shapes and lines with your brushes, dip them into water before tapping your eyeshadows. Local make-up artist Raine Tauber suggests mixing a bit of pigment with a few spritzes of a make-up setting spray to change the texture from powder to paint. Apoly colour with your fingertips and add details like dots and exaggerated lines in unexpected colours.

Try: 1. MAC Prep & Prime Fix - in either PinkLite or GoldLite, R340 each; 2. MUD Eyecolor Compact in Daisy, R330; Switchbeauty 3FullFaceSet R350 (10 synthetic cruelty-free make-up brushes for eyes, face and lips)

ELLE.CO.ZA / @ELLESOUTHAFRICA **105**

















*Hair and Makeup **NANDI KAI** - beauty



www.sncm.co.za



*Hair and Makeup **NANDI KAI** - beauty



www.sncm.co.za







*Hair and Makeup **NANDI KAI** - beauty



www.sncm.co.za



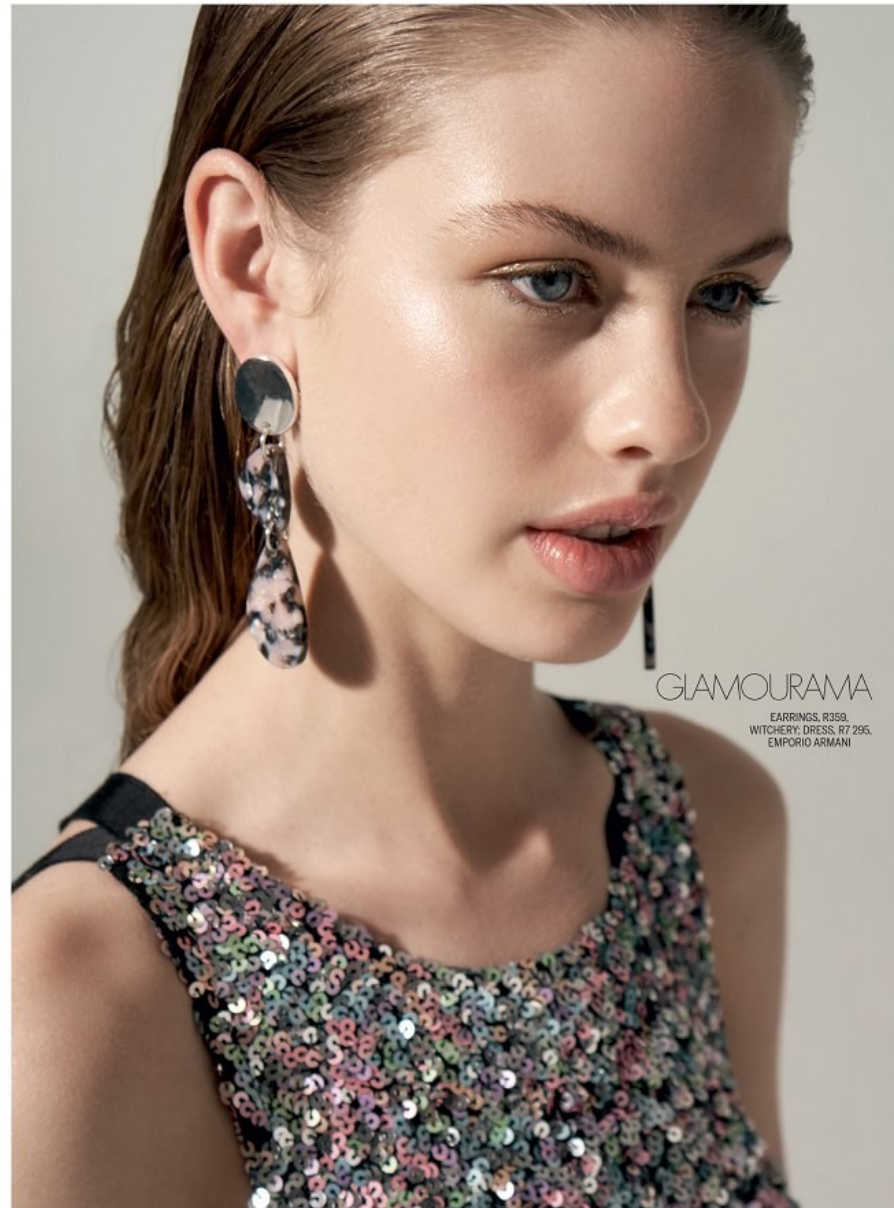
















NEW-AGE DENIM

TOP: R2 200, CALVIN KLEIN;
EARRINGS: R149, H&M





*Hair and Makeup **NANDI KAI** - beauty



www.sncm.co.za











156 MARIECLAIRE.COM June 2015















TANA / *FanJam Models*

Trim off last season's ombré ends and work to get the best of your natural hair colour. Play with your hair's natural texture, which will allow for easy movement.

ANNE FONTAINE SHIRT **R3 995** CLOTH LABEL; EARRINGS, MODEL'S OWN









*Hair and Makeup **NANDI KAI** - beauty



www.sncm.co.za





*Hair and Makeup **NANDI KAI** - beauty



www.sncm.co.za



*Hair and Makeup **NANDI KAI** - beauty



www.sncm.co.za



*Hair and Makeup **NANDI KAI** - beauty



www.sncm.co.za





*Hair and Makeup **NANDI KAI** - beauty



www.sncm.co.za





*Hair and Makeup **NANDI KAI** - beauty



www.sncm.co.za



*Hair and Makeup **NANDI KAI** - beauty



www.sncm.co.za



*Hair and Makeup **NANDI KAI** - beauty



www.sncm.co.za

