

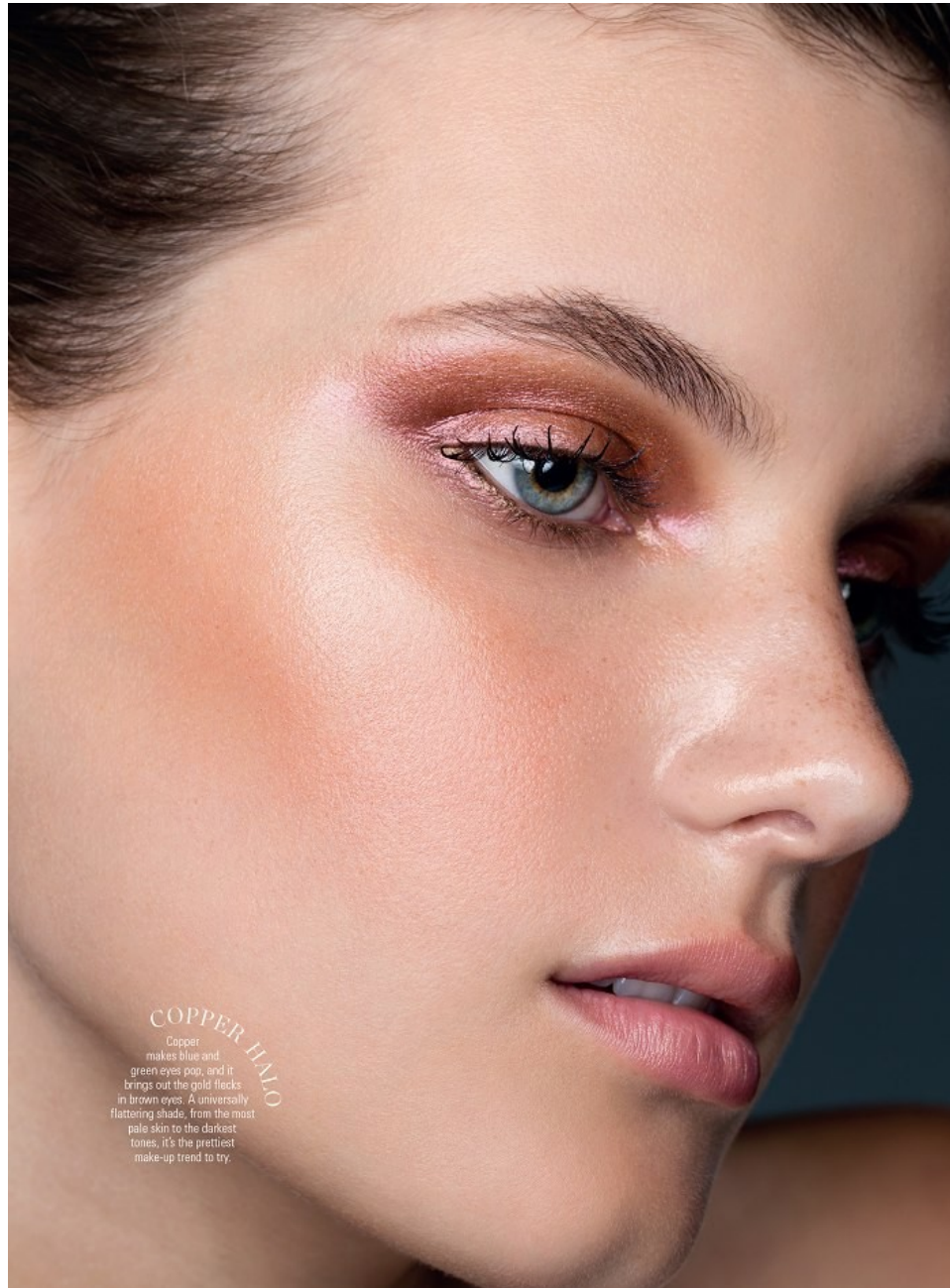
BEAUTY



Here comes the bride, all radiant and bright...  
For flawless, show-stopper make-up, take cue  
from these top 5 right-off-the-runway trends

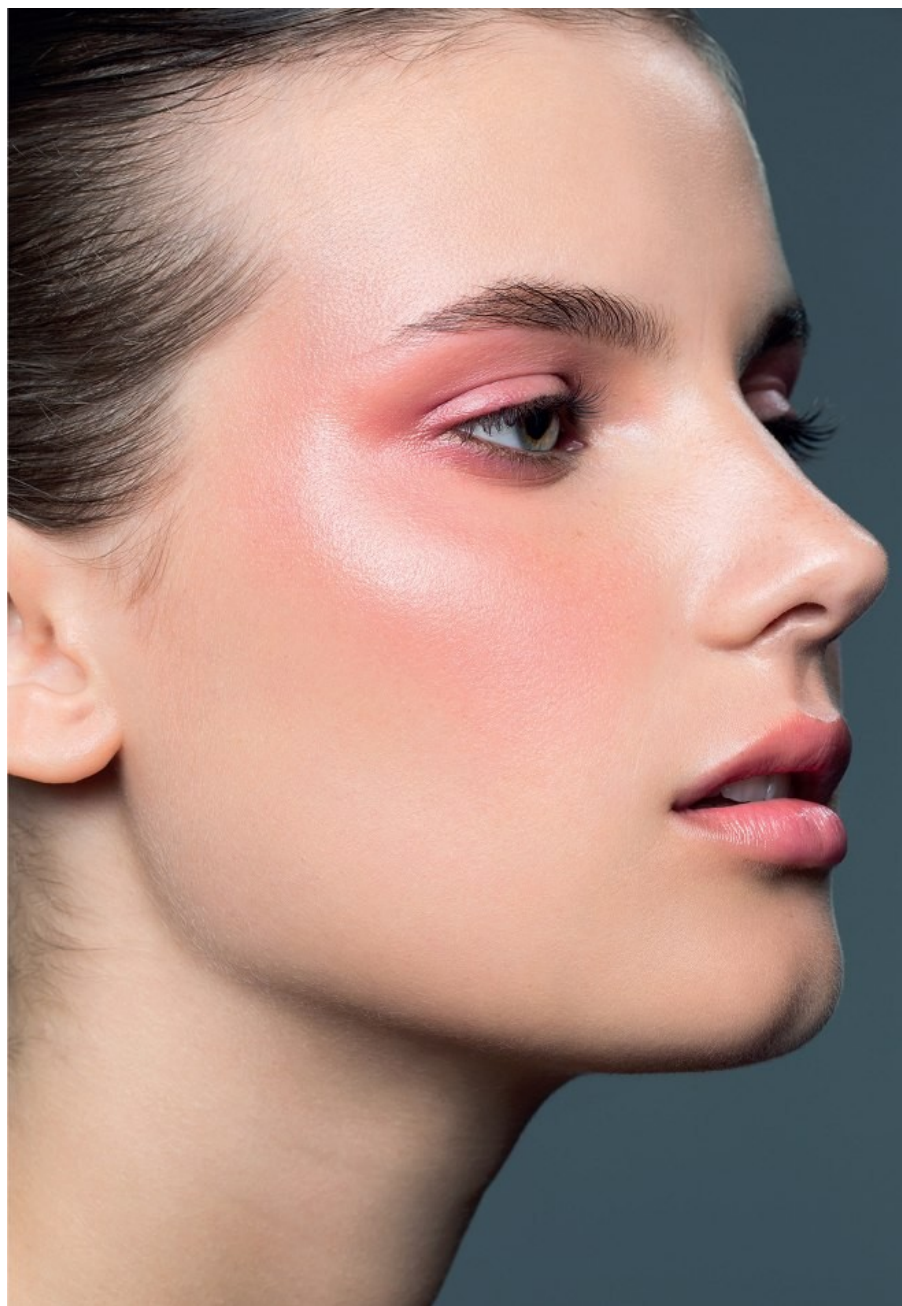
BEAUTY JADE LEGGAT-SMITH  
PHOTOGRAPHY ANDREAS EISELEN

**DRIPPING IN GOLD** Nail-art has been kicked up to a whole new level this season, from glitter-dipped fingers to pearl-studded tips. Be inspired to try something beyond the French-tip mani.











It's official. Blue is having a major moment and the great news is that there's a *hue out there to flatter every skin tone*. This summer, make it your prerogative to experiment with *rebellious shades of indigo, sapphire and turquoise*

# BLUE-EYED GIRL

by lameez hendricks  
photography elford & de la forêt |  
agent emma

## Cerulean lids

**The appeal** Forget blending several shades to achieve that perfect after-dark eye, or fretting about whether your smoky eye is smoky enough. Simply follow the natural contour of your eye with two shades from the royal-blue family if your complexion is fair to medium. Cobalt blue, on the other hand, will complement darker skin tones.

**The technique** Apply a pale shade of blue eyeshadow from the lash line to slightly above the crease. Sweep a darker blue over the lighter shade - imagine you're drawing a half moon onto your lid.





### Lapis lashes

**The appeal** The easiest way to incorporate blue into your make-up repertoire is by swapping your black mascara for blue.

It flatters all eye colours – and skin tones – adding a radiant sparkle by making the white of your eye appear even whiter.

**The technique** Position the wand at the base of your lashes and wiggle the brush up and outwards to give them a fanned-out finish.

Three coats on the upper lashes will do the trick but if you're looking to make your peepers pop, add two coats to your lower lashes, gently moving the brush from side to side.



### Aqua-lined eyes

**The appeal** Draw attention to your eyes with a thin stroke of blue eyeliner for a look that's carefree and confident. While wearing dark liner on the lower lash line only can make the eye appear smaller, this light shade of blue has the opposite effect. Fair complexions should opt for softer azure, while steel blue will look spectacular on cappuccino and dark skins.

**The technique** Trace a soft kohl eyeliner along the rim of your lower lash line, working outwards from the inner corner.



### Indigo cat-eye

**The appeal** Take flirty eyes up a notch with a feline flick that immediately confirms your on-trend status. Indigo will pop on all complexions so let your eyes be the centre of attention and keep the rest of your make-up understated.

**The technique** Work a thick line of gel eyeliner onto the upper lash line, with a flick at the outer corner. For an even finish, fill in any gaps on the lash line and flick.





\*Hair and Makeup **JADE LEGGAT-SMITH** - beauty



[www.sncm.co.za](http://www.sncm.co.za)







\*Hair and Makeup **JADE LEGGAT-SMITH** - beauty



[www.sncm.co.za](http://www.sncm.co.za)



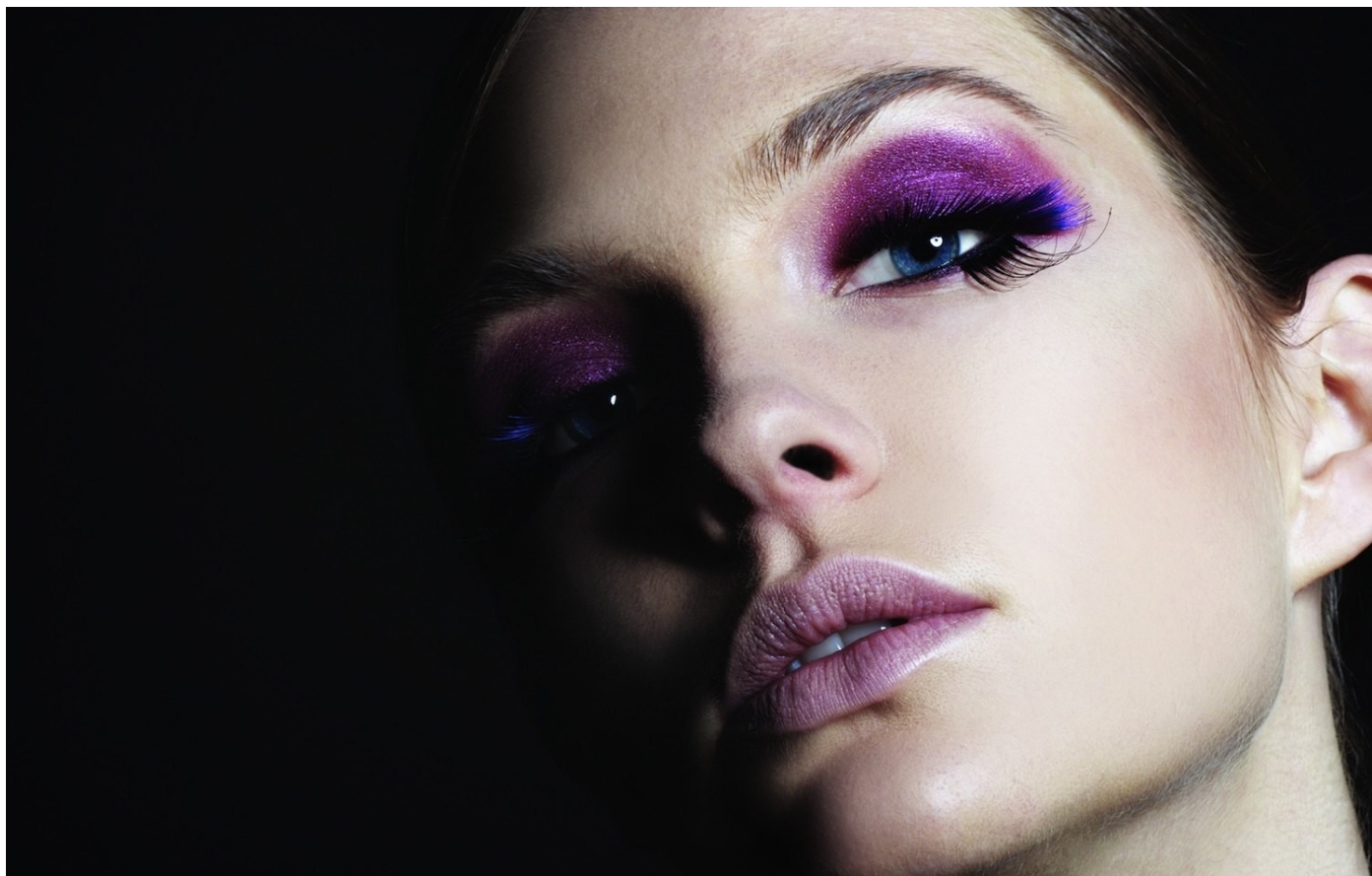


























**MY LIPS ARE  
SEALED**

The key is to keep it bold in this season's hottest hues: oxblood and blueberry. Stains are a great way to ease into the look but for maximum effect, two coats of a matte or semi-matte lipstick are the way to go.

















\*Hair and Makeup **JADE LEGGAT-SMITH** - beauty



[www.sncm.co.za](http://www.sncm.co.za)

